

# Eagle News



## THE MAGICAL WORLD OF LEARNING



10.11.2024

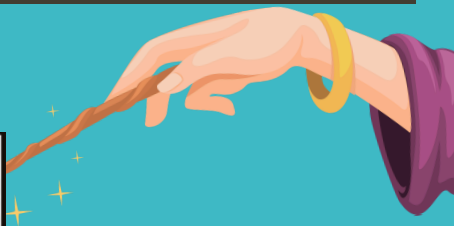


So many magical moments are happening on campus, and we are excited to see our Glover families participate. Thank you to our students who show up at school every day. Check out the list below to see if your child has perfect attendance. Be on the lookout for grade-level meetings to address different concerns and successes in the classroom. Next Saturday is our campus's 30th anniversary celebration. Please reach out to support and participate. Thank you for helping Glover be A Magical World of Learning.

### What's In This Week's Issue?

- Glovers 30th Anniversary
- Perfect Attendance Shoutouts
- Other Upcoming Events
- FBISD Parent Resources Links
- Family Resource Center Updates
- Brighter Bites
- Family Tips From our Practical Parent Education Curriculum
- And much more...!

Read More Comics On  
[Houstonchronical.com/comics](https://houstonchronical.com/comics)



IT'S LIKE ABDUCTING  
A COMPLETELY DIFFERENT  
**SPECIES** IF YOU TAKE THEM  
BEFORE THEY'VE HAD  
THEIR MORNING COFFEE.



### Upcoming Events:

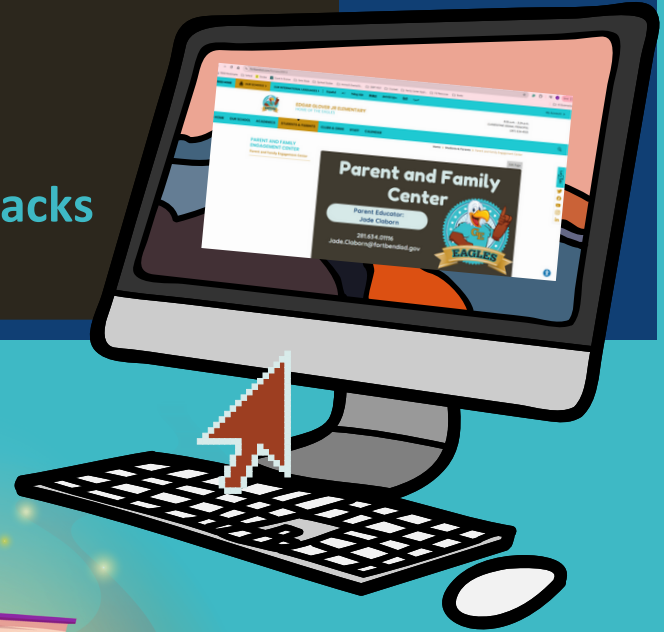
October 11th- 15th - Student Holiday (No School)  
October 19th- 30th Anniversary Carnival  
October 30th- Fall Picture Day  
October 31st -Book Character Parade  
November 1st- No School



# The Magic Continues Online

Visit the [Parent and Family Center webpage](#) for:

- Event Information
- Family Courses
- Grade Level compacts
- Campus Policy
- Brighter Bites FREE Nutritional Packs
- And More!



## FBISD Parent Links & Resources

- [Glover PTO Newsletter](#)
- [Volunteer Background Check](#)
- [GE Parent/Student Handbook](#)
- [Free and Reduced Lunch Application](#)
- [Parent Resources](#)
- [GE Twitter](#)
- [GE Website](#)
- [FBISD 24-25 Calendar](#)
- [Student Code Of Conduct](#)
- [GT Newsletter](#)
- [FBISD Express Newsletter](#)



## Contact Us

**Principal Arana**  
[clementine.arana@fortbendisd.gov](mailto:clementine.arana@fortbendisd.gov)

**Assistant Principal Allen**  
[carissa.allen@fortbendisd.gov](mailto:carissa.allen@fortbendisd.gov)

**Parent Educator Jade Claborn**  
[Jade.Claborn@fortbendisd.gov](mailto:Jade.Claborn@fortbendisd.gov)

An illustration of a carnival tent with a yellow and white striped canopy and a red arched entrance. The tent is flanked by red and white striped curtains. A yellow sign with a blue dotted border is attached to the top of the tent. The sign contains the text 'CARNIVAL' in large, bold, black letters, and 'GLOVER ELEMENTARY 30TH ANNIVERSARY CELEBRATION' in smaller, bold, black letters below it. A small brown flag is attached to the top of the tent.

# **CARNIVAL**

**GLOVER ELEMENTARY 30TH  
ANNIVERSARY  
CELEBRATION**

**SATURDAY, OCTOBER 19TH  
10AM – 2 PM**

**Help us celebrate Glover's 30th anniversary with games, prizes, concession items and more. Ticket packs can be purchased in advance beginning September 25th.**

**JOIN US AND LET THE  
FESTIVITIES BEGIN**



## **The EGE Library Presents Book Character Pumpkin Contest!**

Dear Eagle Parents,

It's October, and that means pumpkins EVERYWHERE!

This month, EGE students have an opportunity to participate in a Book Character Pumpkin Contest. We are asking that you complete this together as a family.

You will be supporting your student's understanding of a character's internal and external traits, as they are learning to describe characters, setting, and major events in a story (plot), using key details in a text.

### **Directions:**

1. Choose your child's favorite book or select one and read it together. If you do not have one, have your child check one out from the library, or visit a bookstore or the public library.
  2. Pick your favorite character from the book.
  3. Purchase a **faux** pumpkin. This year we are using **FAKE** pumpkins for our contest to eliminate the risk of rotting and for the ease of transport.
  4. Use decorations, paint, glue, and any other materials to turn your pumpkin into the character you choose. Be creative!
  5. Then, complete the Character Book Report attached to this form.
- You must turn in your book choice and book report along with your pumpkin submission.**

You can send in your pumpkin, book to accompany it, and book report beginning the week of **October 14th**.

Pumpkins will not be accepted after **Thursday, October 31st**. All students will be able to view each other's projects during their scheduled library time.

There will be a 1st, 2nd, and 3rd place winner for each grade level.

**Winners will be announced November 4th. All pumpkins must be taken home by Friday, November 15th.**





# Literacy Pumpkin *examples*



## Book Character Parade & Story Retelling Project -OPTIONAL

Overview: As part of our Book Character Parade on October 31st, we invite all K-5th grade students to participate in a Story Retelling Project Showcase! This is an exciting opportunity for students to retell a fiction story of their choice using a creative box or board display. Each grade level has specific requirements to ensure the project aligns with their abilities, and we encourage everyone to dress up as their favorite book character for the parade!

### Project Levels by Grade:

- K-2nd Grade:
    - Retell the story using words, pictures, and labels.
    - Focus on basic plot elements: *characters, setting, problem, and solution.*
    - Include a creative design that shows understanding of the story.
  - 3rd-5th Grade:
    - Retell the story using a detailed summary.
    - Include all plot elements: *characters, setting, conflict, resolution, and events.*
    - Focus on the theme of the story and explain its message.
    - Present the retelling in a box or on a board with labels, pictures, and additional creative elements.
    - Requirements:
      - Choose a fiction story (chapter book or picture book).
      - Display your project using a box, poster board, or trifold board.
      - Include all required plot elements for your grade level.
      - Projects are due on October 29th.
- Dress up as your chosen book character for the Book Character Parade!

### Competition Details:

- One winner per grade level will be chosen based on creativity, understanding, and effort.
- All students and teachers will be invited to vote for their favorite projects in each grade level.
- Winners will be announced and will receive a special certificate and prize!

### Examples:



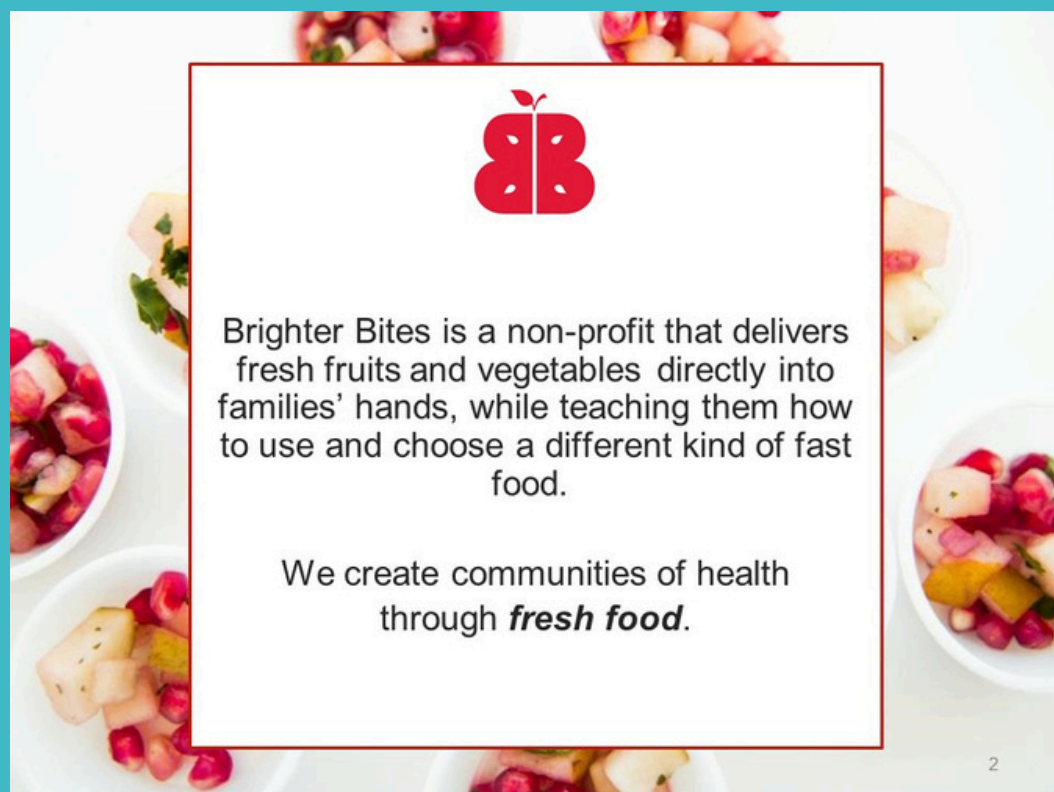




**FREE FRESH Produce Pick Up For  
All Glover Families  
October 30th  
Sign Up Now For Your FREE  
Brighter Bites Fruits and  
Veggies Bag!  
Pick-Up: 2pm-4**

**Volunteers  
Needed:  
Volunteer Bagging  
October 30th  
10am- 12**

**Call Jade Claborn  
281.634.0116  
Jade.Claborn@  
Fortbendisd.gov**



# FBISD Child Nutrition Department

## .....Meal.Benefits.&..... Frequently Asked Questions

### 1.WHERE CAN I FIND THE LUNCH MEAL Income Survey

Go to [www.schoolcafe.com/fbisd](http://www.schoolcafe.com/fbisd) or go online to Fort Bend ISD website under "quick links" click on School Meals icon. Complete one Free & Reduced-price meal application for ALL FBISD students in your household.

**All families** must apply for benefits every school year. Previous year's eligibility expires on 9/19/24. Unless you received a letter that your child is Directly Certified for Free meals, do not complete an application.

**If unable to access the online application on a home computer, you may:**

- Download the School Cafe mobile app in the Apple App Store or Google Play on your smartphone/tablet.
- Visit our Child Nutrition Office or your student's campus computer kiosk for help with your meal lunch application.
- Request a paper application from CND at [mealapps@fortbendisd.com](mailto:mealapps@fortbendisd.com). The paper application method is slower, if you do not hear from CND within 10 days of mailing your application, you should contact us at [mealapps@fortbendisd.com](mailto:mealapps@fortbendisd.com).

### 2. DO I STILL NEED TO FILL OUT A F&R MEAL APPLICATION IF MY STUDENT IS FOSTER/HOMELESS?

If you have not received a Direct Certification letter stating your student is approved for Free meals due to Foster/Homeless status, submit a F&R meal application to avoid paying for meals prior to student being added to the program.

### 3. IF I DO NOT QUALIFY NOW, MAY I APPLY LATER?

Yes, you may reapply at any time during the school year. If you know you don't qualify now due to income, the District still needs the form complete to collect PEIMS data.

### 4. IF MY STUDENT HAS FOOD ALLERGIES,WHAT SHOULD I DO?

All students who need changes to their meals, such as in the case with life-threatening food allergies, will be required to provide physician's documentation by submitting a complete and signed "Request for Dietary Accommodations" form. Please note that all fields on the form must be complete including a signature from a recognized medical authority (i.e. MD, PA, NP); The FBISD Child Nutrition Department shall not accept incomplete forms. Turn in the form directly to the Child Nutrition Department by fax 281-634-1862 Attn: Dietitian OR by mail [DLCNDSpecialDiet@fortbendisd.com](mailto:DLCNDSpecialDiet@fortbendisd.com).

**TO AVOID RECIEVING Income Survey NOTIFICATIONS PLEASE APPLY!!**

**If you have more questions, call 281-634-1855 or refer back to our FAQs on our Child Nutrition website under Free&Reduced Meals tab or Helpful forms tab for forms and School Cafe How to's.**

## Extra Benefits For Our Families



### School Funding

May provide additional funding for state and federal programs and services at your school.



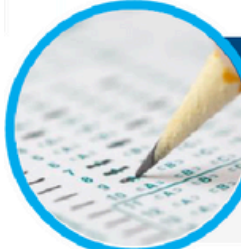
### Athletics

May result in free or discounted fees to participate in activities.



### Career & Technical Education

Financing of dual credit courses for students who are eligible for Free or Reduced Lunch. For more information, contact your school counselor or College & Career readiness advisor.



### Academic Tests

May provide reduced registration fees for AP, SAT, and/or ACT tests.



### Internet Access

May qualify you for discounted rates on internet services.



### College Application Fees

May qualify you for discounted rates associated with college applications.



### Summer School Fees

May qualify you for discounted rates on Summer school Fees.





Contact Your Parent Educator:

Jade Claborn

Jade.Claborn@fortbendisd.gov

281.634.0116

Weekly Practical Parent Education  
Curriculum Module:

Monday

# Glover Family Resource Center Calendar



Coffee and Chat Teams Q.R Code  
Meeting ID: 220 194 421 248  
Passcode: SfSuur

Tuesday

Wednesday

Thursday

Friday

# October 2024

PPE Curriculum Module 4.11 -  
Understanding the Complexities of  
Bullying and Social Cruelty in  
Children  
OPEN LABS For Café Forms  
8:15-9:30

**Uplift Mentor Program**  
**Thursdays & Tuesdays**  
**8-10 Room 101**

**1 Family Center**  
**Closed**  
**No School**

**2 Brighter Bites**  
Volunteered Bagging:  
10-12  
Pickup:2:00-4  
Custodian Appreciation  
Day

**3 Lunch and Learn**  
Location: Café  
Time: 10:30-1:30  
With PPE Lead Conversation

**4 Family Center**  
**Closed**  
**No School**

PPE Curriculum Module 4.11 -  
Understanding the Complexities of  
Bullying and Social Cruelty in  
Children  
OPEN LABS For Café Forms 8:15-  
9:30

**7 Coffee and Chat 8:15- 9:30**  
**(ONLINE ONLY)**  
  
Lunch and Learn  
Location: Café  
Time: 10:30-1:30  
With PPE Lead Conversation

**8 Tech. Tuesdays**  
**Morning 10:00-1**  
**Evening 4:30-5:15**  
  
Skyward/ Schoology

**9 Family Center**  
**Closed**  
**By Appointment**  
**Only**

**10 Family Center**  
**Closed**  
**No School**

**11 Family Center**  
**Closed**  
**No School**

PPE Curriculum Module 4.12 -  
Building and Nurturing Social-  
Emotional Learning in Children  
OPEN LABS For Café Forms 8:15-  
9:30

**14 Family Center**  
**Closed**  
**No School**



**15 Family Center**  
**Closed**  
**No School**

**16 Family Center**  
**Closed**

**17 Family Center**  
**Closed**

**18 Family Center**  
**Closed**

PPE Curriculum Module 4.12 -  
Building and Nurturing Social-  
Emotional Learning in Children  
OPEN LABS For Café Forms 8:15-  
9:30

**21 Coffee and Chat 8:15- 9:30**  
**(ONLINE ONLY)**  
  
Lunch and Learn  
Location: Café  
Time: 10:30-1:30  
With PPE Lead Conversation

**22 Tech. Tuesdays**  
**Morning 10:00-1**  
**Evening 4:30-5:15**  
Microsoft Basics  
Class Dojo

**23 Family Center**  
**Closed**  
**By Appointment**  
**Only**

**24 Lunch and Learn**  
Location: Café  
Time: 10:30-1:30  
With PPE Lead Conversation

**25 Craft and Chat Crochet Style**  
Room 101/ Volunteer Hour  
10-1  
With PPE Lead Conversation

Red Ribbon Week  
PPE Curriculum Module 4.4 -  
Encouraging Children's  
Growth in Social Skills  
OPEN LABS For Café Forms  
8:15-9:30

**28 50th Day of School**  
**Coffee and Chat 9:30-**  
**10:00 (ONLINE ONLY)**  
  
Lunch and Learn  
Location: Café  
Time: 10:30-1:30  
With PPE Lead Conversation

**29 Tech. Tuesdays**  
**10:00-1**  
**Class Dojo**  
**Microsoft Basics**

**30 Brighter Bites**  
Volunteered  
Bagging: 10-12  
Pickup:2:00-4

**31 Book Character**  
**Parade**  
  
Lunch and Learn  
Location: Café  
Time: 10:30-1:30  
With PPE Lead Conversation



**SATURDAY OCT.**  
**19th**  
**30th GLOVERS**  
**ANNIVERSARY**



**The Family Center is taking video and email testimonials! Please share your experience and how the Family Resource Center has benefited you and your family.**

## Week At A Glance

**Mondays:** Coffee and Chat\* 8:15-9:30

Lunch and Learn\* 10:30-1

**Tuesday:** Technology Tuesday

Morning 10-1:30 and Afternoon 4:15-5:30

Please Register for Afternoon Tech Tuesdays

**Wednesday:** Brighter Bites (See Calendar For Specifics)

**Thursday:** Lunch and Learn

**Friday:** Craft and Chat\*  
Volunteer Hour

\*Topic lead discussions will include information from the Practical Parent Education Curriculum.

## Words Can Hurt . . . Sometimes Forever!



*"You never do anything right!"*

*"Why can't you be more like your sister?"*

*"You are so lazy. You'd be a better reader if you would just try."*

Words can be powerful and painful, especially when they come from a parent. If our words and our actions show that we love our children unconditionally, they will grow up feeling good about themselves. Hurtful criticism can leave scars that last a lifetime.

**Help your child feel good about himself...**

- Words, hugs, smiles, and patience show your love.
- Remember that a child spells love T-I-M-E!
- Take a time-out when you are angry or stressed.
- Apologize if you say something critical or unkind.
- Let your child know when you aren't feeling well or are under a lot of pressure. Kids can be pretty supportive!
- Set reasonable expectations that provide lots of opportunities for success.
- Encourage and support. "I can see how hard you are trying," or "I know this is difficult for you."
- Look for positives and build on them.
- Listen to how your child talks to other children. Are your own words and attitudes being mirrored?
- Establish fair boundaries for sibling rivalry. No physical or emotional hurting.
- Create a home environment where everyone is respected.

**Parenting Quick Tips**

© Practical Parent Education. All rights reserved.



# Coffee, Craft & Chat



## Coffee and Chat

Bring Your Favorite Breakfast Beverage and Tune In For Your Weekly Dose of Self Care!



Where: Edgar Glover Jr. Elementary

Online Only

When: Monday @8:150am

Scan The Q.R Code and Join the Teams Conversation



Meet Your

Parent Educators:



Phone:

(281)634.0116

Email:

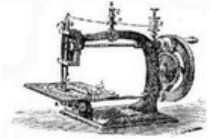
[Jade.Claborn@fortbendisd.gov](mailto:Jade.Claborn@fortbendisd.gov)

Lets Crochet and Stich away the day!

Join the Family Center for a morning of learning new skills and important family tips.



## Craft and Chat

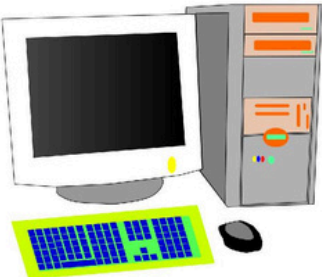


Where: Edgar Glover Jr. Elementary  
Parent Center Room 101

When: Friday @10am

Topics will include information from the Practical Parent Education Curriculum.

# Technology Tuesdays



Meet Your

Parent Educators:

Phone:

(281)634.0116

Email:

[Jade.Claborn@fortbendisd.gov](mailto:Jade.Claborn@fortbendisd.gov)

There will be open labs from 8:15-9:30 for general tech help.

Guardians Grade Level	Time Slot
Kindergarten	10:00-10:30
1st Grade	10:30-11:30
2nd Grade	11:05-11:35
3rd Grade	11:40-12:10
4th Grade	12:10-12:45
5th Grade	12:40-1:10

## Morning Session

Where: Edgar Glover Jr. Elementary  
Family Center, Room 101

When: Tuesday



October 22nd

October 29th

Scan the Q.R Code  
To Join a Session

## Afternoon Session

During our Technology Sessions, we will be reviewing how to access different campus-based websites. Guardians and parents will learn how to navigate Skyward and Schoology

Where: Edgar Glover Jr. Elementary  
Family Center Room 101

When: Tuesday

October 22nd

 schoology @4:30-5:15



# Is Your Child's Phone Safe or a Safety Hazard?



## Cyber Bullying

Bullying is nothing new. What is new is that cyberspace creates a 24-hrs-a-day, 7-days-a-week opportunity to harass! Instant messaging, Web Journals, cell phones and e-mail allow the bully to victimize anonymously. Many parents are oblivious to their children's online world and the pain they may be suffering.

### What is cyber bullying?

- ✦ threatening emails
- ✦ nasty instant messaging sessions
- ✦ repeated text messages to a cell phone
- ✦ websites that mock others
- ✦ texting or emailing using another's identity

### What can parents do?

- ☑ Keep computers in a common room
- ☑ Understand and monitor your child's Internet use.
- ☑ Discuss "netiquette" and online safety with your child.
- ☑ Is your child upset after going online? Ask questions!
- ☑ Investigate parental-controls software

### Reminders for student online users:

- ☑ Never give out passwords or PINs to friends.
- ☑ Don't send messages when you are angry.
- ☑ Never say something in an e-mail that you wouldn't say to somebody's face.
- ☑ Don't believe everything you see or read.
- ☑ Online conversations are not private. Be careful!

### Strategies for targets of cyber bullying:

- ☑ Do not open, forward, read, or respond to messages from cyber bullies
- ☑ Save all messages as evidence.
- ☑ Tell a trusted adult about the problem.
- ☑ If you are threatened with harm, call the police.



Sources: [isafe.org](http://isafe.org), [novabucks.org](http://novabucks.org), [cyberbullying.ca](http://cyberbullying.ca), [cyberbullying.org](http://cyberbullying.org) and  
Leslie A. Pappas- Philadelphia Inquirer

**Parenting** Quick Tips

© Practical Parent Education. All rights reserved.



## Are You Checking Your Students phone and devices Regularly for...?

- Harmful Videos
- Inappropriate messages
- Non age appropriate apps
- Irresponsible Screen Time Hours
- Cyberbullying

Glover would like to work with you and your family to ensure your student is safe and actively engaged at school but we need your help to make sure this starts at home.





# Glover Elementary

## Attendance Matters!

## Plan Ahead.



### 24-25 School Info

- School begins on Aug. 8 and ends May 29.
- School Hours - 8:05 am - 3:25 pm
- Students are marked tardy after 8:05 am and absent after 10:00 am.
- No Early Pickups after 3:00.

### Student Breaks

Thanksgiving Break - Nov. 25-29

Winter Break - Dec. 23-Jan. 8

Spring Break - Mar. 10-14

### Fall Student Holidays

\*September 2

\*September 27

\*October 4

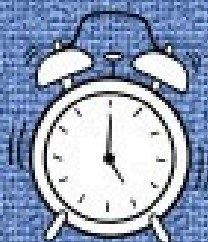
\*\*October 10-15

\*November 1

\*November 11

\*3-Day Weekend

\*\*5-Day Weekend



### Spring Student Holidays

\*January 20

^February 14-17

\*February 28

\*March 31

^April 18-21

\*May 26

\*3-Day Weekend

^4-Day Weekend

### Early Dismissal Days

September 26

December 20

February 13

May 29

Students Dismissed at 12:10 pm

**We encourage scheduling trips and appointments during student holidays to help minimize preventable absences.**



# GLOVER ES PTO

**The Glover PTO needs**

# YOU!

## WHY JOIN THE PTO?



### YOU BENEFIT

Volunteering your time, talents, and energy while socializing with other parents is fun, healthy and rewarding. Being able to contribute and make a positive impact is fulfilling!



### OUR SCHOOL BENEFITS

Help create positive, caring and engaging community by supporting the scholars, teachers and administration!



### OUR COMMUNITY BENEFITS

Teamwork makes the dream work! By working together we are able to have a positive impact in the world around us.

## ANYONE CAN JOIN THE GLOVER PTO!

EMAIL [EDGARGLOVERPTO@GMAIL.COM](mailto:EDGARGLOVERPTO@GMAIL.COM) OR JOIN US FOR OUR MONTHLY MEETINGS.

# News & Events



Fort Bend ISD | Extended Learning

## Extended Day Program

The Extended Day Program is for students in kindergarten through Grade 5, open before and after school to keep students safe and engaged.



Homework Time



SPARK Curriculum  
and Clubs



Physical Activities

### Program Options:

Morning Only  
Afternoons Only  
Morning & Afternoon Combo

Tuition is paid monthly.

Early Dismissal Day and  
Full Service Day child  
care is available.

*Before School*  
6:30 a.m. - 7:30 a.m.

*After School*  
3:25 p.m. - 6:30 p.m.

To register, go to  
**[fortbendisd.reg.eleyo.com](http://fortbendisd.reg.eleyo.com)**

[ExtendedLearning@fortbendisd.com](mailto:ExtendedLearning@fortbendisd.com)  
[fortbendisd.com/ExtendedLearning](http://fortbendisd.com/ExtendedLearning)





# More of Mo City

## Whats Happening in Missouri City



**Missouri City Parks & Recreation: Senior Programs**



**Active Adults 50+**

Check Out the Missouri City Webpage for Activities and Times.

Glover Elementary  
30th Anniversary  
Saturday October 19th



 **FORT BEND COUNTY  
LIBRARIES**  
*Enriching Lives & Expanding Minds*

**Click The Icon for  
Upcoming Events**

# Eagle News



## THE MAGICAL WORLD OF LEARNING



10.25.2024



Glover Families we have kicked off Red Ribbon Week. This week is about more than the cool outfits, please be sure to go home and have conversations about the importance of remaining Drug Free with your student. There are many more fun festivities coming up for October but first thank you to all the families, staff, and council members that came out to support our 30th anniversary. Please don't forget to get involved and stay involved as our campus and your students grow this school year.

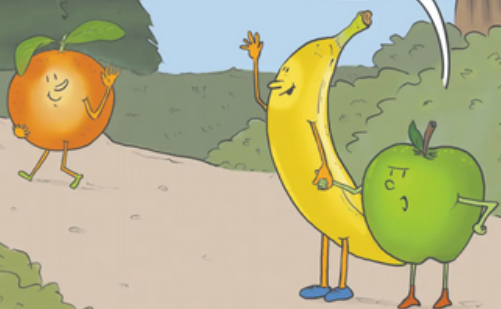
### What's In This Week's Issue?

- Book Character Parade
- Fall Picture Day
- Other Upcoming Events
- FBISD Parent Resources Links
- Family Resource Center Updates
- Brighter Bites
- Family Tips From our Practical Parent Education Curriculum
- And much more...!

Read More Comics On  
[Houstonchronical.com/comics](https://Houstonchronical.com/comics)



I WISH YOU'D STOP  
COMPARING ME WITH  
YOUR EX-IT'S LIKE,  
WELL, YOU KNOW...



10-16 ©2024 S. Camilleri Kolar  
SIX CHIX ©2024 King Features Syndicate, Inc.

### Upcoming Events:

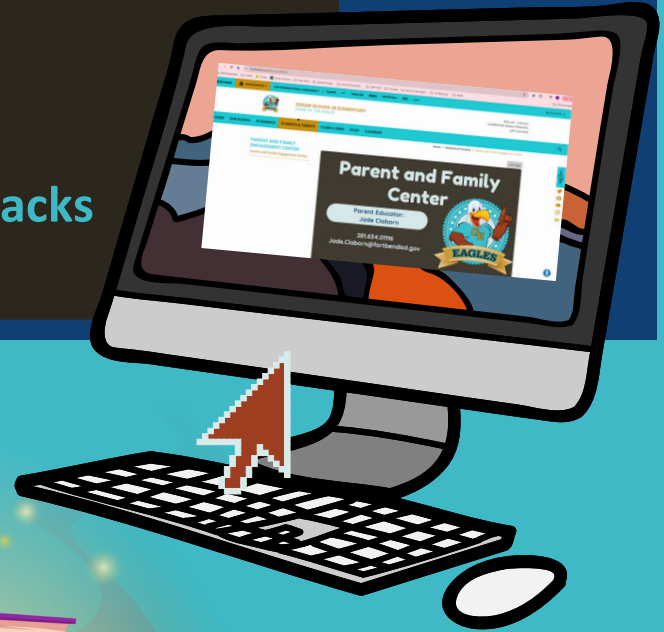
October 19th- 30th Anniversary Carnival  
October 23rd- Pink Out  
October 24th-31st - Red Ribbon Week  
October 28th - 50th day of school  
October 30th - K-2 Field Trip  
October 31st- Book Character Parade  
November 1st- No School  
Nov. 4th- Fall Picture Day



# The Magic Continues Online

Visit the [Parent and Family Center webpage](#) for:

- Event Information
- Family Courses
- Grade Level compacts
- Campus Policy
- Brighter Bites FREE Nutritional Packs
- And More!



## FBISD Parent Links & Resources

- [Glover PTO Newsletter](#)
- [Volunteer Background Check](#)
- [GE Parent/Student Handbook](#)
- [Free and Reduced Lunch Application](#)
- [Parent Resources](#)
- [GE Twitter](#)
- [GE Website](#)
- [FBISD 24-25 Calendar](#)
- [Student Code Of Conduct](#)
- [GT Newsletter](#)
- [FBISD Express Newsletter](#)



## Contact Us

**Principal Arana**  
[clementine.arana@fortbendisd.gov](mailto:clementine.arana@fortbendisd.gov)

**Assistant Principal Allen**  
[carissa.allen@fortbendisd.gov](mailto:carissa.allen@fortbendisd.gov)

**Parent Educator Jade Claborn**  
[Jade.Claborn@fortbendisd.gov](mailto:Jade.Claborn@fortbendisd.gov)



*Shake, rattle and roll on over to*

# *Glover's* **DINER**

EST.  
1950

Join us as we celebrate student's

*50th day of school*

*Monday October 28th*

**Glover Elementary**

*Dress to impress  
in your 50's best!*

The sock hop will be held during  
ancillary!



# GLOVER ELEMENTRY FAMILIES BOOK CHARACTER PARADE

**31st**  
October

**From**  
8:30-9:00

**Refreshments  
in Room 101  
For Guest and  
Literacy Tips**



**The Book Character Parade waiting for you**

**Please RSVP With The Family Center For The Afterparty With  
Refreshments and Literacy Tips. 9:00- 9:30  
(Parents/ Guardians Only For The Afterparty)**

Jade.Claborn@fortbendisd.gov  
281.634.0116



**GLOVER  
ELEMENTARY  
IS DRUG FREE**



# **RED RIBBON WEEK**

**OCTOBER 24TH-OCTOBER 31ST**



**THURSDAY  
OCTOBER 24TH**

**Red Day!  
(Wear  
Red)**



**FRIDAY  
OCTOBER 25TH**

**Spooky  
Day!  
(Wear  
Spooky  
Attire/Spirit  
Shirt)**



**MONDAY  
OCTOBER 28TH**

**50's  
Day!!  
(Wear  
50's  
Attire)**



**TUESDAY  
OCTOBER 29TH**

**Peace Out  
Day!  
(Tie  
Die/Peace  
Out Attire)**



**WEDNESDAY  
OCTOBER  
30TH**

**Healthy  
Living- Drug  
Free Day!  
(Warm ups  
/Athletic  
Wear)**



**THURSDAY  
OCTOBER 31ST**

**Say Boo  
to Drugs!  
(Book  
Character  
Parade  
attire)**





# Guidelines for Contest and Reading Log

CONTEST PERIOD  
FALL

The Student Read Nation Challenge period is October 22nd – November 22nd.

SPRING

The School Read Nation Challenge period is January 13th – February 14th.

## ACCEPTED READING MATERIALS

Books (fiction and nonfiction), magazines and comic books. Digital material, as well as physical print materials are accepted.

Children must keep track of their minutes read each day with the assistance of their teachers and parents and record them on the calendar log provided.

## Lets Get Reading Glover!

See the calendar below to help our campus win!

Submitted calendars will also receive a FREE Canes Kids meal voucher!



## INDIVIDUAL STUDENT PRIZES - ELECTRONIC ITEM

Top Kindergartener **Overall**

Top 1st Grader **Overall**

Top 2nd Grader **Overall**

Top 3rd Grader **Overall**

Top 4th Grader **Overall**

Top 5th Grader **Overall**

## STUDENT WINNER

At the end of the Student Read Nation Challenge, the overall top kindergartener – 5th grade student who achieves the most logged reading minutes will receive a grand prize!

· Please note, there will be only one overall winner for each grade and not for each school. Winners are determined by the total number of minutes read over the challenge period.

· For example, and clarification, your top 1st grader will compete against the other school's top 1st graders to determine the overall top 1st grader for all of the entries submitted.

## SCHOOL WINNER

At the end of the School Read Nation Challenge, the TOP 3 schools with the highest minutes read will win a grand prize! The schools will be ranked First (1st), Second (2nd), and Third (3rd) based off the total minutes read submitted.

## SCHOOL PRIZES

· **Grand Prize School** – the school with the most points will win furniture and decorations for their library and books (subject to Rockets inventory) and a Houston Rockets Celebratory Rally featuring special Rockets Guests!

· **Second (2nd) Place School** - wins a \$500 gift certificate to a book/literacy retailer/bookstore.

· **Third (3rd) Place School** - wins a \$250 gift certificate to a book/literacy retailer/bookstore.

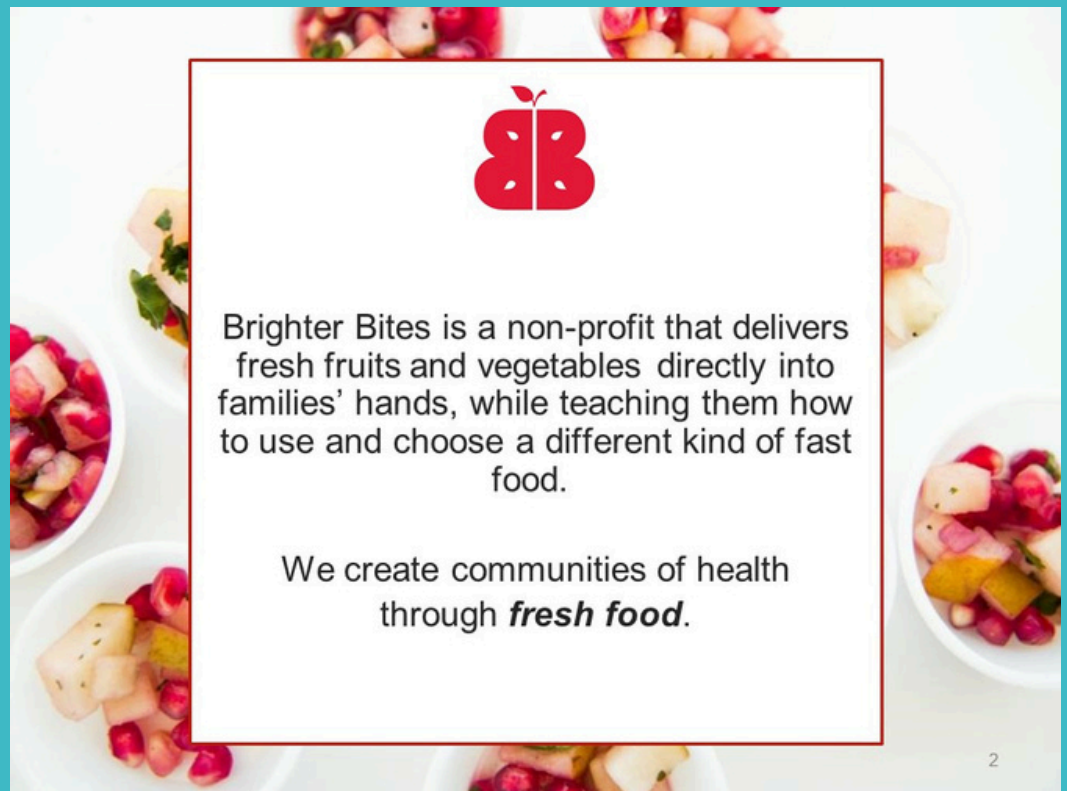
· At the end of the School Read Nation Challenge, an autographed item will be awarded to ALL participants of both challenge periods.



**FREE FRESH Produce Pick Up For  
All Glover Families  
October 30th  
Sign Up Now For Your FREE  
Brighter Bites Fruits and  
Veggies Bag!  
Pick-Up: 2pm-4**

**Volunteers  
Needed:  
Volunteer Bagging  
October 30th  
10am- 12**

**Call Jade Claborn  
281.634.0116  
Jade.Claborn@  
Fortbendisd.gov**







## **The EGE Library Presents Book Character Pumpkin Contest!**

Dear Eagle Parents,

It's October, and that means pumpkins EVERYWHERE!

This month, EGE students have an opportunity to participate in a Book Character Pumpkin Contest. We are asking that you complete this together as a family.

You will be supporting your student's understanding of a character's internal and external traits, as they are learning to describe characters, setting, and major events in a story (plot), using key details in a text.

### **Directions:**

1. Choose your child's favorite book or select one and read it together. If you do not have one, have your child check one out from the library, or visit a bookstore or the public library.
  2. Pick your favorite character from the book.
  3. Purchase a **faux** pumpkin. This year we are using **FAKE** pumpkins for our contest to eliminate the risk of rotting and for the ease of transport.
  4. Use decorations, paint, glue, and any other materials to turn your pumpkin into the character you choose. Be creative!
  5. Then, complete the Character Book Report attached to this form.
- You must turn in your book choice and book report along with your pumpkin submission.**

You can send in your pumpkin, book to accompany it, and book report beginning the week of **October 14th**.

Pumpkins will not be accepted after **Thursday, October 31st**. All students will be able to view each other's projects during their scheduled library time.

There will be a 1st, 2nd, and 3rd place winner for each grade level.

**Winners will be announced November 4th. All pumpkins must be taken home by Friday, November 15th.**



# Literacy Pumpkin *examples*





# Book Character Parade & Story Retelling Project -OPTIONAL

Overview: As part of our Book Character Parade on October 31st, we invite all K-5th grade students to participate in a Story Retelling Project Showcase! This is an exciting opportunity for students to retell a fiction story of their choice using a creative box or board display. Each grade level has specific requirements to ensure the project aligns with their abilities, and we encourage everyone to dress up as their favorite book character for the parade!

## Project Levels by Grade:

- K-2nd Grade:
    - Retell the story using words, pictures, and labels.
    - Focus on basic plot elements: *characters, setting, problem, and solution.*
    - Include a creative design that shows understanding of the story.
  - 3rd-5th Grade:
    - Retell the story using a detailed summary.
    - Include all plot elements: *characters, setting, conflict, resolution, and events.*
    - Focus on the theme of the story and explain its message.
    - Present the retelling in a box or on a board with labels, pictures, and additional creative elements.
    - Requirements:
      - Choose a fiction story (chapter book or picture book).
      - Display your project using a box, poster board, or trifold board.
      - Include all required plot elements for your grade level.
      - Projects are due on October 29th.
- Dress up as your chosen book character for the Book Character Parade!

## Competition Details:

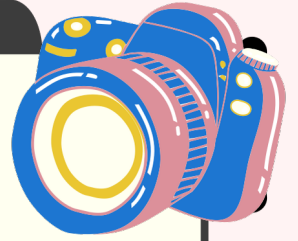
- One winner per grade level will be chosen based on creativity, understanding, and effort.
- All students and teachers will be invited to vote for their favorite projects in each grade level.
- Winners will be announced and will receive a special certificate and prize!

## Examples:





**EDGAR GLOVER JR  
ELEMENTARY SCHOOL**



# **FALL PICTURE DAY**

## **NOVEMBER 4, 2024**

**ALL STUDENTS WILL BE  
PHOTOGRAPHED**

**GO ONLINE TO VIEW PACKAGE OPTIONS. CHOOSE  
FROM A VARIETY OF BACKGROUND CHOICES. DON'T  
WAIT! ORDER ONLINE TODAY!**



**CLICK/LOG ON TO THE  
LINK BELOW OR SCAN  
QR CODE FOR  
DIRECT ACCESS TO  
ORDERING SITE**



**[HTTPS://INTER-STATE.COM/FLYERENTRY/92164B](https://inter-state.com/flyerentry/92164B)**

# FBISD Child Nutrition Department

## .....Meal.Benefits.&..... Frequently Asked Questions

### 1.WHERE CAN I FIND THE LUNCH MEAL Income Survey

Go to [www.schoolcafe.com/fbisd](http://www.schoolcafe.com/fbisd) or go online to Fort Bend ISD website under "quick links" click on School Meals icon. Complete one Free & Reduced-price meal application for ALL FBISD students in your household.

**All families** must apply for benefits every school year. Previous year's eligibility expires on 9/19/24. Unless you received a letter that your child is Directly Certified for Free meals, do not complete an application.

**If unable to access the online application on a home computer, you may:**

- Download the School Cafe mobile app in the Apple App Store or Google Play on your smartphone/tablet.
- Visit our Child Nutrition Office or your student's campus computer kiosk for help with your meal lunch application.
- Request a paper application from CND at [mealapps@fortbendisd.com](mailto:mealapps@fortbendisd.com). The paper application method is slower, if you do not hear from CND within 10 days of mailing your application, you should contact us at [mealapps@fortbendisd.com](mailto:mealapps@fortbendisd.com).

### 2. DO I STILL NEED TO FILL OUT A F&R MEAL APPLICATION IF MY STUDENT IS FOSTER/HOMELESS?

If you have not received a Direct Certification letter stating your student is approved for Free meals due to Foster/Homeless status, submit a F&R meal application to avoid paying for meals prior to student being added to the program.

### 3. IF I DO NOT QUALIFY NOW, MAY I APPLY LATER?

Yes, you may reapply at any time during the school year. If you know you don't qualify now due to income, the District still needs the form complete to collect PEIMS data.

### 4. IF MY STUDENT HAS FOOD ALLERGIES,WHAT SHOULD I DO?

All students who need changes to their meals, such as in the case with life-threatening food allergies, will be required to provide physician's documentation by submitting a complete and signed "Request for Dietary Accommodations" form. Please note that all fields on the form must be complete including a signature from a recognized medical authority (i.e. MD, PA, NP); The FBISD Child Nutrition Department shall not accept incomplete forms. Turn in the form directly to the Child Nutrition Department by fax 281-634-1862 Attn: Dietitian OR by mail [DLCNDSpecialDiet@fortbendisd.com](mailto:DLCNDSpecialDiet@fortbendisd.com).

**TO AVOID RECIEVING Income Survey NOTIFICATIONS PLEASE APPLY!!**

**If you have more questions, call 281-634-1855 or refer back to our FAQs on our Child Nutrition website under Free&Reduced Meals tab or Helpful forms tab for forms and School Cafe How to's.**

## Extra Benefits For Our Families



### School Funding

May provide additional funding for state and federal programs and services at your school.



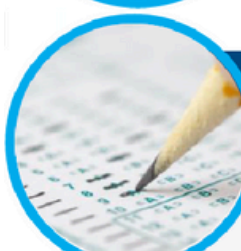
### Athletics

May result in free or discounted fees to participate in activities.



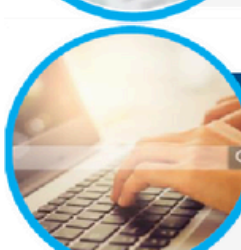
### Career & Technical Education

Financing of dual credit courses for students who are eligible for Free or Reduced Lunch. For more information, contact your school counselor or College & Career readiness advisor.



### Academic Tests

May provide reduced registration fees for AP, SAT, and/or ACT tests.



### Internet Access

May qualify you for discounted rates on internet services.



### College Application Fees

May qualify you for discounted rates associated with college applications.



### Summer School Fees

May qualify you for discounted rates on Summer school Fees.





Contact Your Parent Educator:

Jade Claborn

Jade.Claborn@fortbendisd.gov

281.634.0116

Weekly Practical Parent Education  
Curriculum Module:

Monday

# Glover Family Resource Center Calendar



Coffee and Chat Teams Q.R Code  
Meeting ID: 220 194 421 248  
Passcode: SfSuur



Tuesday

Wednesday

Thursday

Friday

# October 2024

PPE Curriculum Module 4.11 - Understanding the Complexities of Bullying and Social Cruelty in Children OPEN LABS For Café Forms 8:15-9:30	<b>Uplift Mentor Program</b> Thursdays & Tuesdays 8-10 Room 101	1 <b>Family Center</b> Closed No School	2 <b>Brighter Bites</b> Volunteered Bagging: 10-12 Pickup:2:00-4 Custodian Appreciation Day	3 Lunch and Learn Location: Café Time: 10:30-1:30 With PPE Lead Conversation	4 <b>Family Center</b> Closed No School
PPE Curriculum Module 4.11 - Understanding the Complexities of Bullying and Social Cruelty in Children OPEN LABS For Café Forms 8:15- 9:30	7 Coffee and Chat 8:15- 9:30 (ONLINE ONLY)  Lunch and Learn Location: Café Time: 10:30-1:30 With PPE Lead Conversation	8 Tech. Tuesdays Morning 10:00-1 Evening 4:30-5:15  Skyward/ Schoology	9 <b>Family Center</b> Closed By Appointment Only	10 <b>Family Center</b> Closed No School	11 <b>Family Center</b> Closed No School
PPE Curriculum Module 4.12 - Building and Nurturing Social- Emotional Learning in Children OPEN LABS For Café Forms 8:15- 9:30	14 <b>Family Center</b> Closed No School 	15 <b>Family Center</b> Closed No School	16 <b>Family Center</b> Closed	17 <b>Family Center</b> Closed	18 <b>Family Center</b> Closed
PPE Curriculum Module 4.12 - Building and Nurturing Social- Emotional Learning in Children OPEN LABS For Café Forms 8:15- 9:30	21 Coffee and Chat 8:15- 9:30 (ONLINE ONLY)  Lunch and Learn Location: Café Time: 10:30-1:30 With PPE Lead Conversation	22 Tech. Tuesdays Morning 10:00-1 Evening 4:30-5:15 Microsoft Basics Class Dojo	23 <b>Family Center</b> Closed By Appointment Only	24 Lunch and Learn Location: Café Time: 10:30-1:30 With PPE Lead Conversation	25 Craft and Chat Crochet Style Room 101/ Volunteer Hour 10-1 With PPE Lead Conversation
Red Ribbon Week PPE Curriculum Module 4.4 - Encouraging Children's Growth in Social Skills OPEN LABS For Café Forms 8:15-9:30	28 50th Day of School Coffee and Chat 9:30- 10:00 (ONLINE ONLY)  Lunch and Learn Location: Café Time: 10:30-1:30 With PPE Lead Conversation	29 Tech. Tuesdays 10:00-1 Class Dojo Microsoft Basics	30 <b>Brighter Bites</b> Volunteered Bagging: 10-12 Pickup:2:00-4	31 Book Character Parade  Lunch and Learn Location: Café Time: 10:30-1:30 With PPE Lead Conversation	 <b>SATURDAY OCT.</b> <b>19th</b> 30th GLOVERS ANNIVERSARY



**The Family Center is taking video and email testimonials! Please share your experience and how the Family Resource Center has benefited you and your family.**

## Week At A Glance

**Mondays:** Coffee and Chat\* 8:15-9:30

Lunch and Learn\* 10:30-1

**Tuesday:** Technology Tuesday

Morning 10-1:30 and Afternoon 4:15-5:30

Please Register for Afternoon Tech Tuesdays

**Wednesday:** Brighter Bites (See Calendar For Specifics)

**Thursday:** Lunch and Learn

**Friday:** Craft and Chat\*  
Volunteer Hour

\*Topic lead discussions will include information from the Practical Parent Education Curriculum.

## Parenting the Shy Child

Shyness is hard enough to deal with when we are adults, so imagine how hard it is for children! Overcoming this inborn character trait takes nurturing and patience along with other key strategies:



- ♥ Respect that the child may be shy
- ♥ Refrain from viewing shyness as a negative
- ♥ Avoid using the word "shy" to describe your child either in front or behind child
- ♥ Praise efforts toward socialization
- ♥ Encourage social settings with other same-aged children
- ♥ Have child practice what he/she would like to say to parent or other trusted adult
- ♥ Avoid pushing child to speak or socialize when child is not ready
- ♥ Show empathy to child's struggles
- ♥ Point out others with shyness tendencies such as Abraham Lincoln, Mohandas Gandhi, T.S. Eliot and Nelson Mandela who have gone on to have great success as adults.

*"Shyness is simply a human difference, a variation that can be a form of richness."*

- Dr. Marco Battaglia



**Parenting Quick Tips**

© Practical Parent Education. All rights reserved.

# Coffee, Craft & Chat



## Coffee and Chat

Bring Your Favorite Breakfast Beverage and Tune In For Your Weekly Dose of Self Care!



Where: Edgar Glover Jr. Elementary

Online Only

When: Monday @8:150am

Scan The Q.R Code and Join the Teams Conversation



Meet Your

Parent Educators:



Phone:

(281)634.0116

Email:

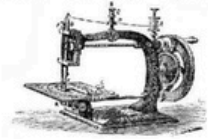
[Jade.Claborn@fortbendisd.gov](mailto:Jade.Claborn@fortbendisd.gov)

Lets Crochet and Stich away the day!

Join the Family Center for a morning of learning new skills and important family tips.



## Craft and Chat

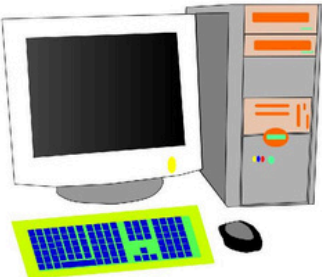


Where: Edgar Glover Jr. Elementary  
Parent Center Room 101

When: Friday @10am

Topics will include information from the Practical Parent Education Curriculum.

# Technology Tuesdays



Meet Your

Parent Educators:

Phone:

(281)634.0116

Email:

[Jade.Claborn@fortbendisd.gov](mailto:Jade.Claborn@fortbendisd.gov)

There will be open labs from 8:15-9:30 for general tech help.

Guardians Grade Level	Time Slot
Kindergarten	10:00-10:30
1st Grade	10:30-11:30
2nd Grade	11:05-11:35
3rd Grade	11:40-12:10
4th Grade	12:10-12:45
5th Grade	12:40-1:10

## Morning Session

Where: Edgar Glover Jr. Elementary  
Family Center, Room 101

When: Tuesday



October 22nd

October 29th

Scan the Q.R Code  
To Join a Session

## Afternoon Session

During our Technology Sessions, we will be reviewing how to access different campus-based websites. Guardians and parents will learn how to navigate Skyward and Schoology

Where: Edgar Glover Jr. Elementary  
Family Center Room 101

When: Tuesday

October 22nd

 schoology @4:30-5:15





# Your Family Might Be Missing Out Academically!

**School  
starts at  
8:05 a.m.**

## Arriving to school late and leaving early could set your child at an academic disadvantage.

- Just 20 Minutes could lead to your child being behind in any of the core subjects.
- 30 Minutes late or early could lead to your child missing certain learning TEKS (this may be a Science or Social Studies lesson). Leading Too...
  - Lack of academic motivation
  - Issues retaining information from previously lessons
  - Disrupting the learning process
  - Poor Academic Performance

The habits you build with your student now will help your child in intermediate school, high school, and later in their career.

### How Can You help?

- Set up a good night routine.
  - Set out clothes for the next day.
  - Read before bed and limit screen time.
  - Utilize rewards for following the bedtime weekly or monthly.
- Have an “Exit” plan and try to stick to it every morning.
- Refrain from picking up your child early from school unless absolutely necessary.



**Remember your child needs you to be successful!**



**School  
dismissal is  
at  
3:25 p.m.**

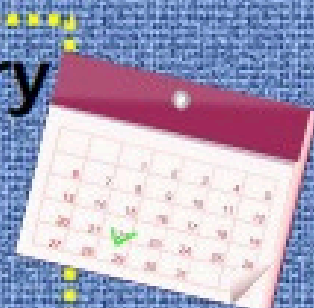




# Glover Elementary

## Attendance Matters!

## Plan Ahead.



### 24-25 School Info

- School begins on Aug. 8 and ends May 29.
- School Hours - 8:05 am - 3:25 pm
- Students are marked tardy after 8:05 am and absent after 10:00 am.
- No Early Pickups after 3:00.

### Student Breaks

Thanksgiving Break - Nov. 25-29

Winter Break - Dec. 23-Jan. 8

Spring Break - Mar. 10-14

### Fall Student Holidays

\*September 2

\*September 27

\*October 4

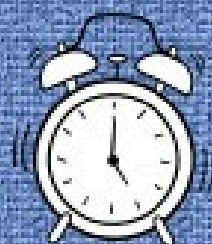
\*\*October 10-15

\*November 1

\*November 11

\*3-Day Weekend

\*\*5-Day Weekend



### Spring Student Holidays

\*January 20

^February 14-17

\*February 28

\*March 31

^April 18-21

\*May 26

\*3-Day Weekend

^4-Day Weekend

### Early Dismissal Days

September 26

December 20

February 13

May 29

Students Dismissed at 12:10 pm

**We encourage scheduling trips and appointments during student holidays to help minimize preventable absences.**



# GLOVER ES PTO

**The Glover PTO needs**

# YOU!

## WHY JOIN THE PTO?



### YOU BENEFIT

Volunteering your time, talents, and energy while socializing with other parents is fun, healthy and rewarding. Being able to contribute and make a positive impact is fulfilling!



### OUR SCHOOL BENEFITS

Help create positive, caring and engaging community by supporting the scholars, teachers and administration!



### OUR COMMUNITY BENEFITS

Teamwork makes the dream work! By working together we are able to have a positive impact in the world around us.

## ANYONE CAN JOIN THE GLOVER PTO!

EMAIL [EDGARGLOVERPTO@GMAIL.COM](mailto:EDGARGLOVERPTO@GMAIL.COM) OR JOIN US FOR OUR MONTHLY MEETINGS.

# News & Events



Fort Bend ISD | Extended Learning

## Extended Day Program

The Extended Day Program is for students in kindergarten through Grade 5, open before and after school to keep students safe and engaged.



Homework Time



SPARK Curriculum  
and Clubs



Physical Activities

### Program Options:

Morning Only  
Afternoons Only  
Morning & Afternoon Combo

Tuition is paid monthly.

Early Dismissal Day and  
Full Service Day child  
care is available.

*Before School*  
6:30 a.m. - 7:30 a.m.

*After School*  
3:25 p.m. - 6:30 p.m.

To register, go to  
**[fortbendisd.reg.eleyo.com](https://fortbendisd.reg.eleyo.com)**

[ExtendedLearning@fortbendisd.com](mailto:ExtendedLearning@fortbendisd.com)  
[fortbendisd.com/ExtendedLearning](https://fortbendisd.com/ExtendedLearning)





# More of Mo City

## Whats Happening in Missouri City



**Missouri City Parks & Recreation: Senior Programs**



**Active Adults 50+**

Check Out the Missouri City Webpage for Activities and Times.



**Farmers Market Partners**  
**Missouri City**



 **FORT BEND COUNTY  
LIBRARIES**  
*Enriching Lives & Expanding Minds*

**Click The Icon for  
Upcoming Events**

# Eagle News

THE MAGICAL WORLD OF  
LEARNING



10.04.2024

Another week down as our Eagles soar into October. We are excited to see the growth from the start of the school year.

This marks a 15 day countdown until Glovers 30th anniversary carnival. Tickets are on sale now! There are many other ways to help support our campus celebration so please be sure to contact PTO via email for more info. Information is being sent home about the Book Character Parade and Retelling Showcase. This optional project is a great family project to showcase students artistic story telling skills. There will be winners in every grade level and your student may be one.

Read More Comics On [Houstonchronical.com/comics](http://Houstonchronical.com/comics)



## What's In This Week's Issue?

- Glovers 30th Anniversary
- T-Shirt Sales
- Upcoming Events
- FBISD Parent Resources Links
- Family Resource Center Updates
- Brighter Bites
- Family Tips From our Practical Parent Education Curriculum
- And much more...!



FORT BEND COUNTY  
**LIBRARIES**

Enriching Lives & Expanding Minds

## Upcoming Events:

October 8th- 4th parent meeting (5-6 pm)

October 9th - End of the 1st 9 weeks

October 9th - PBIS Celebration

October 11th- 15th - Student Holiday (No School)

October 19th- 30th Anniversary Carnival

October 31st -Book Character Parade

November 1st- No School

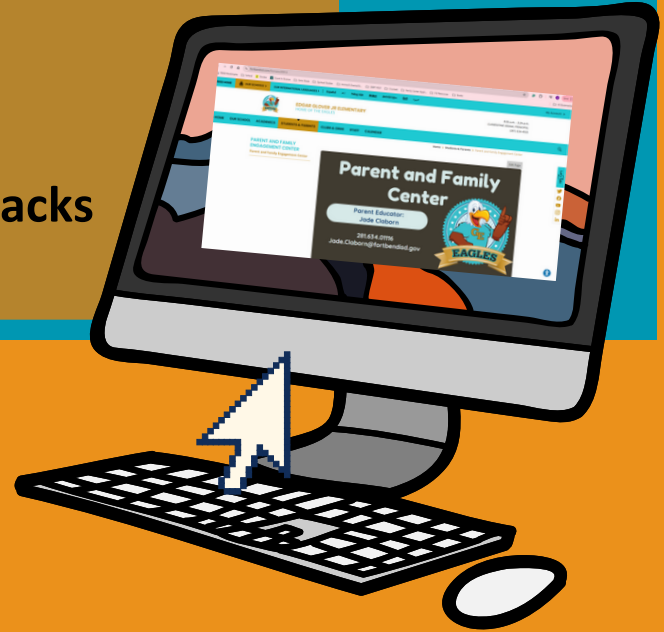
Click The Icon for  
Upcoming Events



# The Magic Continues Online

Visit the Parent and Family Center webpage for:

- Event Information
- Family Courses
- Grade Level compacts
- Campus Policy
- Brighter Bites FREE Nutritional Packs
- And More!



## FBISD Parent Links & Resources

- Glover PTO Newsletter
- Volunteer Background Check
- GE Parent/Student Handbook
- Free and Reduced Lunch Application
- Parent Resources
- GE Twitter
- GE Website
- FBISD 24-25 Calendar
- Student Code Of Conduct
- GT Newsletter
- FBISD Express Newsletter



**Principal Arana**  
[clementine.arana@fortbendisd.gov](mailto:clementine.arana@fortbendisd.gov)

**Assistant Principal Allen**  
[carissa.allen@fortbendisd.gov](mailto:carissa.allen@fortbendisd.gov)

**Parent Educator Jade Claborn**  
[Jade.Claborn@fortbendisd.gov](mailto:Jade.Claborn@fortbendisd.gov)





**FREE FRESH Produce Pick Up For  
All Glover Families  
October 16th  
Sign Up Now For Your FREE  
Brighter Bites Fruits and  
Veggies Bag!  
Pick-Up: 2pm-4**

**Volunteers  
Needed:  
Volunteer Bagging  
October 16th  
10am- 12**

**Call Jade Claborn  
281.634.0116  
Jade.Claborn@  
Fortbendisd.gov**





Contact Your Parent Educator:

Jade Claborn

Jade.Claborn@fortbendisd.gov

281.634.0116

Weekly Practical Parent Education  
Curriculum Module:

Monday

# Glover Family Resource Center Calendar



Coffee and Chat Teams Q.R Code  
Meeting ID: 220 194 421 248  
Passcode: SfSuur



Tuesday

Wednesday

Thursday

Friday

# October 2024

PPE Curriculum Module 4.11 - Understanding the Complexities of Bullying and Social Cruelty in Children OPEN LABS For Café Forms 8:15-9:30	<b>Uplift Mentor Program</b> Thursdays & Tuesdays 8-10 Room 101	<b>1 Family Center Closed</b> <b>No School</b>	<b>2 Brighter Bites</b> Volunteered Bagging: 10-12 Pickup:2:00-4 Custodian Appreciation Day	<b>3 Lunch and Learn</b> Location: Café Time: 10:30-1:30 With PPE Lead Conversation	<b>4 Family Center Closed</b> <b>No School</b>
PPE Curriculum Module 4.11 - Understanding the Complexities of Bullying and Social Cruelty in Children OPEN LABS For Café Forms 8:15-9:30	<b>7 Coffee and Chat 8:15- 9:30 (ONLINE ONLY)</b>  Lunch and Learn Location: Café Time: 10:30-1:30 With PPE Lead Conversation	<b>8 Tech. Tuesdays</b> <b>Morning 10:00-1</b> <b>Evening 4:30-5:15</b>  Skyward/ Schoology	<b>9 Family Center Closed</b> <b>By Appointment Only</b>	<b>10 Family Center Closed</b> <b>No School</b>	<b>11 Family Center Closed</b> <b>No School</b>
PPE Curriculum Module 4.12 - Building and Nurturing Social-Emotional Learning in Children OPEN LABS For Café Forms 8:15-9:30	<b>14 Family Center Closed</b> <b>No School</b> 	<b>15 Family Center Closed</b> <b>No School</b>	<b>16 Family Center Closed</b>	<b>17 Family Center Closed</b>	<b>18 Family Center Closed</b>
PPE Curriculum Module 4.12 - Building and Nurturing Social-Emotional Learning in Children OPEN LABS For Café Forms 8:15-9:30	<b>21 Coffee and Chat 8:15- 9:30 (ONLINE ONLY)</b>  Lunch and Learn Location: Café Time: 10:30-1:30 With PPE Lead Conversation	<b>22 Tech. Tuesdays</b> <b>Morning 10:00-1</b> <b>Evening 4:30-5:15</b> Microsoft Basics Class Dojo	<b>23 Family Center Closed</b> <b>By Appointment Only</b>	<b>24 Lunch and Learn</b> Location: Café Time: 10:30-1:30 With PPE Lead Conversation	<b>25 Craft and Chat Crochet Style</b> Room 101/ Volunteer Hour 10-1 With PPE Lead Conversation
<b>Red Ribbon Week</b> PPE Curriculum Module 4.4 - Encouraging Children's Growth in Social Skills OPEN LABS For Café Forms 8:15-9:30	<b>28 50th Day of School</b> Coffee and Chat 9:30-10:00 (ONLINE ONLY)  Lunch and Learn Location: Café Time: 10:30-1:30 With PPE Lead Conversation	<b>29 Tech. Tuesdays</b> 10:00-1 Class Dojo Microsoft Basics	<b>30 Brighter Bites</b> Volunteered Bagging: 10-12 Pickup:2:00-4	<b>31 Book Character Parade</b>  Lunch and Learn Location: Café Time: 10:30-1:30 With PPE Lead Conversation	 <b>SATURDAY OCT. 19th</b> <b>30th GLOVERS ANNIVERSARY</b>



The Family Center is taking video and email testimonials! Please share your experience and how the Family Resource Center has benefited you and your family.

## Week At A Glance

**Mondays:** Coffee and Chat\* 8:15-9:30

Lunch and Learn\* 10:30-1

**Tuesday:** Technology Tuesday

Morning 10-1:30 and Afternoon 4:15-5:30

Please Register for Afternoon Tech Tuesdays

**Wednesday:** Brighter Bites (See Calendar For Specifics)

**Thursday:** Lunch and Learn

**Friday:** Craft and Chat\*  
Volunteer Hour

\*Topic lead discussions will include information from the Practical Parent Education Curriculum.

**WHEN KIDS ARE CRUEL...**



**AN IMPORTANT GOAL IN PARENTING IS TO REAR CHILDREN WHO ARE CARING AND RESPECTFUL OF OTHERS. IF YOU SEE YOUR CHILD BEING UNKIND TO OTHER CHILDREN...**

- **TAKE THE ISSUE SERIOUSLY, BUT DON'T OVERREACT.**
- **KNOW THAT DENYING, MINIMIZING OR MAKING EXCUSES ONLY REINFORCES THE BEHAVIOR.**
- **MAKE IT CLEAR THIS KIND OF BEHAVIOR IS NOT ACCEPTABLE.**
- **TALK WITH TEACHERS AND OTHER ADULTS TO SEE IF THEY HAVE OBSERVED SIMILAR BEHAVIORS.**
- **ESTABLISH CONSEQUENCES FOR UNKIND ACTS; BE CONSISTENT IN FOLLOWING THROUGH.**



➤ **TEACH AND MODEL APPROPRIATE WAYS FOR HANDLING ANGER, USING SELF-CONTROL, SHOWING RESPECT, ETC.**

- **PRAISE APPROPRIATE BEHAVIORS.**
- **MONITOR TV VIEWING, VIDEO GAMES, INTERNET.**
- **SEEK PROFESSIONAL HELP IF PROBLEMS APPEAR SERIOUS.**

**Parenting Quick Tips**

© Practical Parent Education. All rights reserved.

# Is Your Child's Phone Safe or a Safety Hazard?

## Texting is a Privilege

Having a cell phone or digital device is a privilege which teens should earn. If a teenager abuses the privilege with inappropriate texting, parents have the right, even the responsibility, to take away his/her digital device for a period of time. Here are some suggested guidelines:



- ◆ On a school night, put the digital device away in parents' bedroom at bedtime. The student can get it back the next morning when he/she is ready to go to school.
- ◆ Digital devices cannot be used during home work time unless the use is needed for the school work
- ◆ Children may not text when a parent or other adult is talking to them. Conversation takes priority.
- ◆ Establish family No Digital Device times which everyone observes: meal times, worship time, family meeting times, etc.
- ◆ Let your children know you will be checking their text messages regularly for dangerous activities. You need to know everyone with whom they are exchanging text messages just as you know the friends with whom they go out.
- ◆ If a student's grades drop below acceptable levels, he/she loses the digital device privilege until the grades have recovered.
- ◆ Stress there must be **NO** texting while driving.

**Parenting Quick Tips**

©Practical Parent Education. All rights reserved.



## Are You Checking Your Students Phone Regularly for...?

- Harmful Videos
- Inappropriate messages
- Non age appropriate apps
- Irresponsible Screen Time Hours
- Cyberbullying

Glover would like to work with you and your family to ensure your student is safe and actively engaged at school but we need your help to make sure this starts at home.



Job aid:

# Parent Payment of Badge Replacement Fee



For: Parent


Purpose: How to view and pay a badge replacement fee (online only).

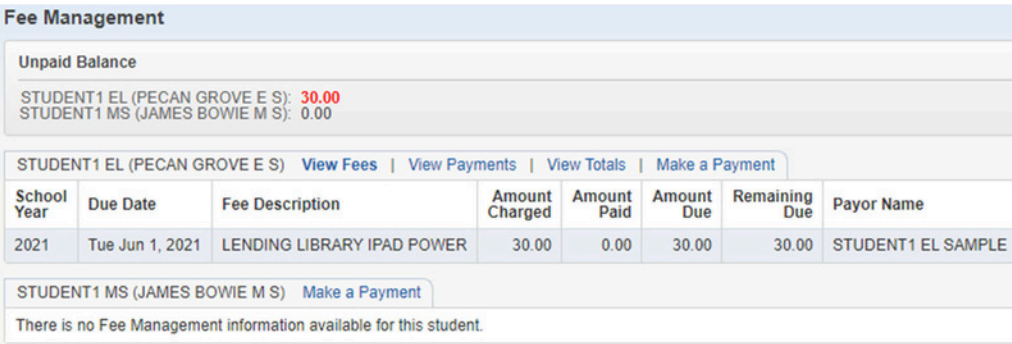
Updated: July 23, 2024

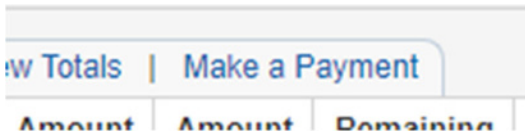
The printing of a replacement for a student badge that is lost or damaged will result in a \$5.00 fee that the parent will be expected to pay. Payment will be accepted online only. No payments by cash, check or money order will be accepted at campus. Do not pay school's Revtrak webstore. The payment must be initiated within Skyward. This job aid illustrates how to find the fee in Skyward and pay it online.


**Note: Fee names and amounts in this handout are examples only. You will see all fees that apply to your student.**

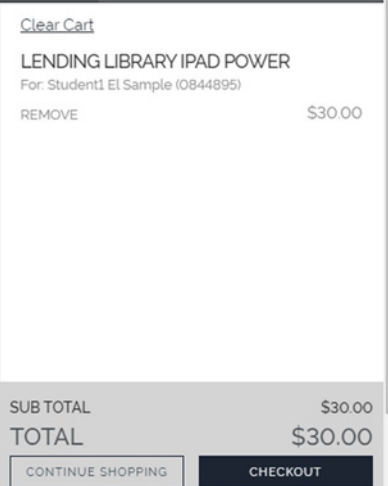
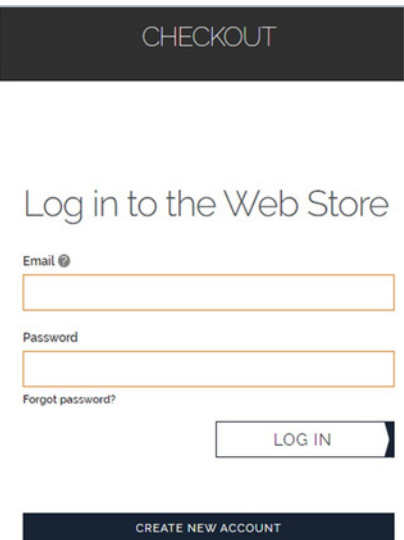
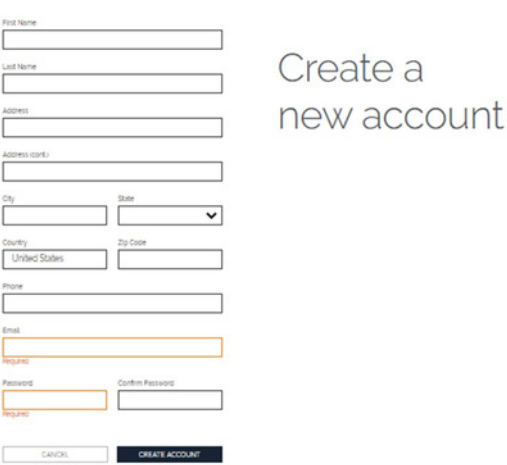
Step 1	
Parent/Guardian goes to the Skyward information page.	<p>Go to <a href="http://www.fortbendisd.com/Domain/170">www.fortbendisd.com/Domain/170</a> or click on the Skyward icon at the District website or your school's website</p>  <p>Look for the link to <u><a href="#">LOGIN TO FAMILY ACCESS</a></u> If you need to be given a login, there is information about who to contact.</p>
Step 2	
Parent/Guardian logs in to Skyward.  When the login screen opens, type in your login and password, and click on the Sign In button.	

Step 3	
Click on "Fee Management" along the left side menu.	

Step 3 Example	
<p>This family has two students. Notice that the first listed student owes a \$30.00 fee and that the second listed student has no fees.</p>	

Step 4	
Click "Make a Payment"	

Step 5	
At the payment page you will see the billed item. Click "ADD TO CART."	

Step 6	
<p>Next click "CHECKOUT"</p>	
Step 7	
<p>Log in to the webstore. Many parents have a webstore login for paying other fees, dues, etc. If you don't have a webstore account, click "CREATE NEW ACCOUNT"</p>	
Step 8 (if needed)	
<p>A new account needs just a few items</p>	



Step 9

If you are satisfied with your method of payment and amount, click “PLACE ORDER.”

You may add a new card or e-check information, click “CHANGE.”

We accept debit or credit card or e-check. If you would like to pay by e-check you will be asked for your bank routing number and checking account.

CHECKOUT

VERIFY

Review & Submit

BILLING

EDIT

BILL TO

PAYMENT METHOD

CHANGE

VISA

Items

LENDING LIBRARY IPAD POWER

Quantity: 1

For: Student1 El Sample (0844895)

SUB TOTAL

TOTAL

PLACE ORDER

Step 10

This shows successful payment

Be sure to print a receipt. If the email on your account is correct you will get an emailed receipt.

✓

Your order has been placed

PRINT RECEIPT

←

Step 11

Back in Skyward Fee Management, your payment is shown and your Remaining Due is adjusted.

Fee Description	Amount Charged	Amount Paid	Amount Due	Remaining Due	Payor Name
LENDING LIBRARY IPAD POWER	30.00	30.00	0.00	0.00	STUDENT1 EL SAMPLE



# Glover Elementary

## Attendance Matters!

## Plan Ahead.



### 24-25 School Info

- School begins on Aug. 8 and ends May 29.
- School Hours - 8:05 am - 3:25 pm
- Students are marked tardy after 8:05 am and absent after 10:00 am.
- No Early Pickups after 3:00.

### Student Breaks

Thanksgiving Break - Nov. 25-29

Winter Break - Dec. 23-Jan. 8

Spring Break - Mar. 10-14

### Fall Student Holidays

\*September 2

\*September 27

\*October 4

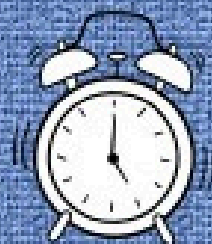
\*\*October 10-15

\*November 1

\*November 11

\*3-Day Weekend

\*\*5-Day Weekend



### Spring Student Holidays

\*January 20

^February 14-17

\*February 28

\*March 31

^April 18-21

\*May 26

\*3-Day Weekend

^4-Day Weekend

### Early Dismissal Days

September 26

December 20

February 13

May 29

Students Dismissed at 12:10 pm

**We encourage scheduling trips and appointments during student holidays to help minimize preventable absences.**



# GLOVER ES PTO

**The Glover PTO needs**

# YOU!

## WHY JOIN THE PTO?



### YOU BENEFIT

Volunteering your time, talents, and energy while socializing with other parents is fun, healthy and rewarding. Being able to contribute and make a positive impact is fulfilling!



### OUR SCHOOL BENEFITS

Help create positive, caring and engaging community by supporting the scholars, teachers and administration!



### OUR COMMUNITY BENEFITS

Teamwork makes the dream work! By working together we are able to have a positive impact in the world around us.

## ANYONE CAN JOIN THE GLOVER PTO!

EMAIL [EDGARGLOVERPTO@GMAIL.COM](mailto:EDGARGLOVERPTO@GMAIL.COM) OR JOIN US FOR OUR MONTHLY MEETINGS.



# News & Events



Fort Bend ISD | Extended Learning

## Extended Day Program

The Extended Day Program is for students in kindergarten through Grade 5, open before and after school to keep students safe and engaged.



Homework Time



SPARK Curriculum  
and Clubs



Physical Activities

### Program Options:

Morning Only  
Afternoons Only  
Morning & Afternoon Combo

Tuition is paid monthly.

Early Dismissal Day and  
Full Service Day child  
care is available.

*Before School*  
6:30 a.m. - 7:30 a.m.

*After School*  
3:25 p.m. - 6:30 p.m.

To register, go to  
**[fortbendisd.reg.eleyo.com](http://fortbendisd.reg.eleyo.com)**

[ExtendedLearning@fortbendisd.com](mailto:ExtendedLearning@fortbendisd.com)  
[fortbendisd.com/ExtendedLearning](http://fortbendisd.com/ExtendedLearning)



# More of Mo City

## Whats Happening in Missouri City



**Missouri City Parks & Recreation: Senior Programs**



**Active Adults 50+**

Check Out the Missouri City Webpage for Activities and Times.

Glover Elementary  
30th Anniversary  
Saturday October 19th



 **FORT BEND COUNTY  
LIBRARIES**  
*Enriching Lives & Expanding Minds*

Click The Icon for  
Upcoming Events

A stylized illustration of a carnival tent. The tent has a yellow and white striped canopy and a red and white striped entrance. A large yellow sign with a blue dotted border is hanging from the top of the tent. The sign contains the text 'CARNIVAL' in large blue letters, and 'GLOVER ELEMENTARY 30TH ANNIVERSARY CELEBRATION' in smaller blue letters below it. The background is a solid light yellow color.

# CARNIVAL

**GLOVER ELEMENTARY 30TH  
ANNIVERSARY  
CELEBRATION**

**SATURDAY, OCTOBER 19TH  
10AM – 2 PM**

**Help us celebrate Glover's 30th anniversary with games, prizes, concession items and more. Ticket packs can be purchased in advance beginning September 25th.**

**JOIN US AND LET THE  
FESTIVITIES BEGIN**



# Eagle News



## THE MAGICAL WORLD OF LEARNING



10.31. 2024



As we wrap up another productive school week, it's a great time to reflect on all the accomplishments and learning experiences we've had. Whether mastering a challenging subject, making progress on a long-term project, or simply staying organized, each step forward contributes to our academic growth. With fall break on the horizon, it's important to take a moment to celebrate these successes and recharge. This upcoming fall break offers a perfect opportunity to relax, enjoy the changing seasons, and prepare mentally and physically for the rest of the semester. Remember to balance rest with some light review, ensuring you return refreshed and ready to tackle new challenges. Enjoy your weekend and the well-deserved time off as we count down the days until the Fall Thanksgiving Holiday.



**Read More Comics On  
[Houstonchronical.com/comics](http://Houstonchronical.com/comics)**



## What's In This Week's Issue?

- Fall Picture Day
- Other Upcoming Events
- FBISD Parent Resources Links
- Family Resource Center Updates
- Brighter Bites
- Family Tips From our Practical Parent Education Curriculum
- And much more...!



**Refer To The Student Handbook For Our cellphone policy:**  
Please ensure all cellphones are turned off and put away in the child's backpack.

## Upcoming Events:

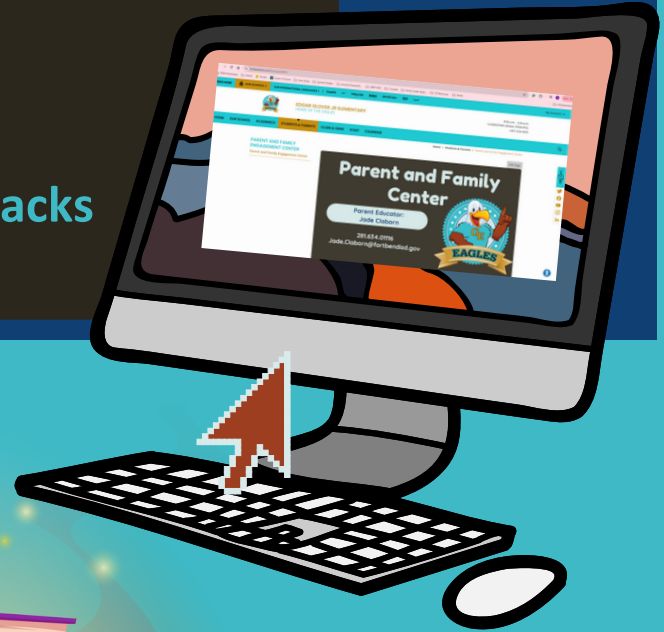
- Nov. 1st- No School
- Nov. 4th- Fall Picture Day
- Nov. 8th- STEM Day
- Nov. 11th- No School
- Nov. 13th - World Kindness day
- Brighter bites distribution
- Nov. 21st- Thanksgiving family luncheon
- Nov. 25th-29th- Fall Holiday



# The Magic Continues Online

Visit the [Parent and Family Center webpage](#) for:

- Event Information
- Family Courses
- Grade Level compacts
- Campus Policy
- Brighter Bites FREE Nutritional Packs
- And More!



## FBISD Parent Links & Resources

- [Glover PTO Newsletter](#)
- [Volunteer Background Check](#)
- [GE Parent/Student Handbook](#)
- [Free and Reduced Lunch Application](#)
- [Parent Resources](#)
- [GE Twitter](#)
- [GE Website](#)
- [FBISD 24-25 Calendar](#)
- [Student Code Of Conduct](#)
- [GT Newsletter](#)
- [FBISD Express Newsletter](#)



## Contact Us

**Principal Arana**  
[clementine.arana@fortbendisd.gov](mailto:clementine.arana@fortbendisd.gov)

**Assistant Principal Allen**  
[carissa.allen@fortbendisd.gov](mailto:carissa.allen@fortbendisd.gov)

**Parent Educator Jade Claborn**  
[Jade.Claborn@fortbendisd.gov](mailto:Jade.Claborn@fortbendisd.gov)



# Guidelines for Contest and Reading Log

CONTEST PERIOD  
FALL

The Student Read Nation Challenge period is October 22nd – November 22nd.

SPRING

The School Read Nation Challenge period is January 13th – February 14th.

## ACCEPTED READING MATERIALS

Books (fiction and nonfiction), magazines and comic books. Digital material, as well as physical print materials are accepted.

Children must keep track of their minutes read each day with the assistance of their teachers and parents and record them on the calendar log provided.

## Lets Get Reading Glover!

See the calendar below to help our campus win!

Submitted calendars will also receive a FREE Canes Kids meal voucher!



## INDIVIDUAL STUDENT PRIZES - ELECTRONIC ITEM

Top Kindergartener **Overall**

Top 1st Grader **Overall**

Top 2nd Grader **Overall**

Top 3rd Grader **Overall**

Top 4th Grader **Overall**

Top 5th Grader **Overall**

## STUDENT WINNER

At the end of the Student Read Nation Challenge, the overall top kindergartener – 5th grade student who achieves the most logged reading minutes will receive a grand prize!

· Please note, there will be only one overall winner for each grade and not for each school. Winners are determined by the total number of minutes read over the challenge period.

· For example, and clarification, your top 1st grader will compete against the other school's top 1st graders to determine the overall top 1st grader for all of the entries submitted.

## SCHOOL WINNER

At the end of the School Read Nation Challenge, the TOP 3 schools with the highest minutes read will win a grand prize! The schools will be ranked First (1st), Second (2nd), and Third (3rd) based off the total minutes read submitted.

## SCHOOL PRIZES

· **Grand Prize School** – the school with the most points will win furniture and decorations for their library and books (subject to Rockets inventory) and a Houston Rockets Celebratory Rally featuring special Rockets Guests!

· **Second (2nd) Place School** - wins a \$500 gift certificate to a book/literacy retailer/bookstore.

· **Third (3rd) Place School** - wins a \$250 gift certificate to a book/literacy retailer/bookstore.

· At the end of the School Read Nation Challenge, an autographed item will be awarded to ALL participants of both challenge periods.

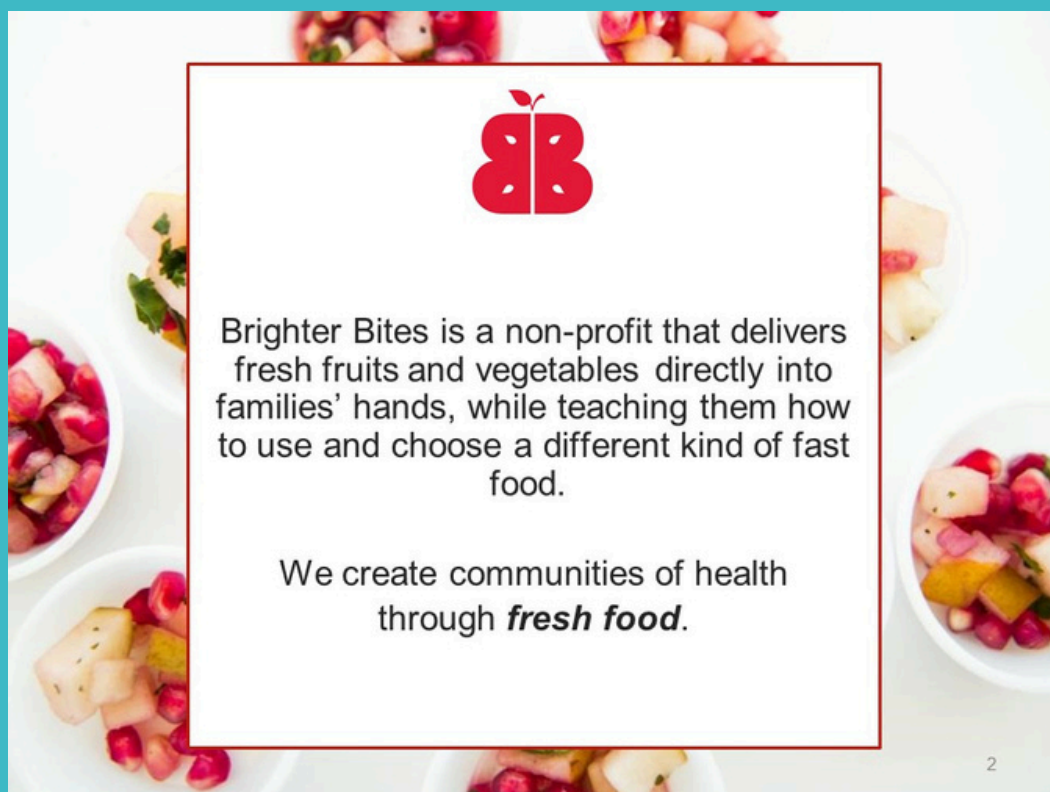




**FREE FRESH Produce Pick Up For  
All Glover Families  
November 13th  
Sign Up Now For Your FREE  
Brighter Bites Fruits and  
Veggies Bag!  
Pick-Up: 2pm-4**

**Volunteers  
Needed:  
Volunteer Bagging  
November 13th  
10am- 12**

**Call Jade Claborn  
281.634.0116  
Jade.Claborn@  
Fortbendisd.gov**

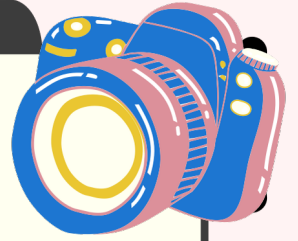


2





**EDGAR GLOVER JR  
ELEMENTARY SCHOOL**



# **FALL PICTURE DAY**

## **NOVEMBER 4, 2024**

**ALL STUDENTS WILL BE  
PHOTOGRAPHED**

**GO ONLINE TO VIEW PACKAGE OPTIONS. CHOOSE  
FROM A VARIETY OF BACKGROUND CHOICES. DON'T  
WAIT! ORDER ONLINE TODAY!**




**CLICK/LOG ON TO THE  
LINK BELOW OR SCAN  
QR CODE FOR  
DIRECT ACCESS TO  
ORDERING SITE**



**[HTTPS://INTER-STATE.COM/FLYERENTRY/92164B](https://inter-state.com/flyerentry/92164B)**

Weekly Practical Parent Education  
Curriculum Module:

	Monday	Tuesday	Wednesday	Thursday	Friday
PPE Curriculum Module 1.3 - Identifying Your Role as the Primary Model for Your Child	<b>Uplift Mentor Program</b> <b>Thursdays &amp; Tuesdays</b> <b>8-10</b> <b>Room 101</b>		Coffee and Chat Teams Q,R Code Meeting ID: 220 194 421 248 Passcode: SfSuur		1 <b>Family Center Closed</b> <b>No School</b>
PPE Curriculum Module 1.3 - Identifying Your Role as the Primary Model for Your Child	4 Coffee and Chat 8:15-9:30 (ONLINE ONLY) Lunch and Learn Location: Café Time: 10:30-1:30 With PPE Lead Conversation	5 Tech. Tuesdays 10:00-1:00 Microsoft Basics Skyward/ Schoology	6 <b>Family Center Closed</b> <b>By Appointment Only</b>	7 Lunch and Learn Location: Café Time: 10:30-1:30 With PPE Lead Conversation Stem Day	8 <b>STEM Day</b> Craft and Chat With Crochet Room 101/ Volunteer Hour 10-1 With PPE Lead Conversation
PPE Curriculum Module 4.7 - Teaching Children Kindness and Respect for Other Children <b>Book Fair Week</b>	11 <b>Family Center Closed</b> <b>No School</b>	12 Tech. Tuesdays 10:00-11 Microsoft Basics Skyward/ Schoology	13 <b>Brighter Bites</b> Volunteered Bagging: 10-12 Pickup: 2:00-4 World Kindness Day	14 Lunch and Learn Location: Café Time: 10:30-1:30 With PPE Lead Conversation	15 Craft and Chat With Crochet Room 101/ Volunteer Hour 10-1 With PPE Lead Conversation
<b>Week of Thanks</b> PPE Curriculum Module 4.7 - Teaching Children Kindness and Respect for Other Children <b>Book fair Week</b>	18 Coffee and Chat <b>With The Principal</b> 8:15-9:30 Lunch and Learn Location: Café Time: 10:30-1:30 With PPE Lead Conversation	19 Tech. Tuesdays <b>Morning</b> 10:00-1 <b>Evening</b> 4:30-5:15 Microsoft Basics Skyward/ Schoology	20 <b>Family Center Closed</b> <b>By Appointment Only</b>	21 Last Uplift Mentor Session <b>Thanksgiving</b> <b>Family Luncheon</b>	22 Craft and Chat With Crochet Room 101/ Volunteer Hour 10-1 With PPE Lead Conversation
PPE Curriculum Module 5.7 - Resolving Homework Issues	25	26	27	28	29
<b>Holiday/ No School</b>					



**The Family Center is taking video and email testimonials! Please share your experience and how the Family Resource Center has benefited you and your family.**

## Week At A Glance

**Mondays:** Coffee and Chat\* 8:15-9:30  
Lunch and Learn\* 10:30-1

**Tuesday:** Technology Tuesday

Morning 10-1:30 and Afternoon 4:15-5:30  
Please Register for Afternoon Tech Tuesdays

**Wednesday:** Brighter Bites (See Calendar For Specifics)

**Thursday:** Lunch and Learn

**Friday:** Craft and Chat\*  
Volunteer Hour

\*Topic lead discussions will include information from the Practical Parent Education Curriculum.



## Feeling Frazzled?

All parents feel this way at times. Parenting is a tough job! But, when you do feel stressed, it is critically important that you take steps to relieve such feelings before you hurt a family member either verbally or physically.

- \* Take time out...for yourself and your child.
- \* Let your child know that you are feeling stressed or angry and that you need some time to yourself...what good role modeling!
- \* Postpone disciplinary actions until you have time to think them through calmly.
- \* If you lose your temper, or make hurtful remarks, say you are sorry
- \* Ask another adult to step in and give you some relief.
- \* Take a walk, exercise, or involve yourself in a stress relieving activity that you enjoy.
- \* Do something fun with your child.
- \* Make sure you are taking time to meet your own needs. No one can parent effectively when emotionally drained or physically exhausted.
- \* Take a parenting class where you can share with other parents and find out you are not alone.



**Parenting Quick Tips**

© Practical Parent Education. All rights reserved.



# Coffee, Craft & Chat



## Coffee and Chat

Bring Your Favorite Breakfast Beverage and Tune In For Your Weekly Dose of Self Care!



Where: Edgar Glover Jr. Elementary

Online Only

When: Monday @8:150am

Scan The Q.R Code and  
Join the Teams Conversation



Meet Your

Parent Educators:



Phone:

(281)634.0116

Email:

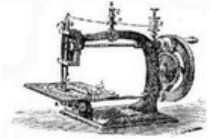
[Jade.Claborn@fortbendisd.gov](mailto:Jade.Claborn@fortbendisd.gov)

Lets Crochet and Stich away the day!

Join the Family Center for a morning of learning  
new skills and important family tips.



## Craft and Chat



Where: Edgar Glover Jr. Elementary  
Parent Center Room 101

When: Friday @10am

Topics will include information from the Practical Parent Education Curriculum.

# Technology Tuesdays



Scan The Q.R Code  
To Sign-Up

Meet Your

Parent Educators:

Phone:

(281)634.0116

Email:

[Jade.Claborn@fortbendisd.gov](mailto:Jade.Claborn@fortbendisd.gov)

There will be open labs from  
8:15-9:30 for general tech help.

Guardians Grade Level

Time Slot

Kindergarten	10:00-10:30
1st Grade	10:30-11:30
2nd Grade	11:05-11:35
3rd Grade	11:40-12:10
4th Grade	12:10-12:45
5th Grade	12:40-1:10

## Morning Session

Where: Edgar Glover Jr. Elementary  
Family Center Room 101

When: Tuesday



## Afternoon Session

During our Technology Sessions we will  
be reviewing how to access different  
campus based websites. Learn how to  
navigate Skyward and Schoology.



Where: Edgar Glover Jr. Elementary  
Family Center Room 101

When: Tuesday  
November 5th  
@4:30-5:15



# Your Family Might Be Missing Out Academically!

**School  
starts at  
8:05 a.m.**

## Arriving to school late and leaving early could set your child at an academic disadvantage.

- Just 20 Minutes could lead to your child being behind in any of the core subjects.
- 30 Minutes late or early could lead to your child missing certain learning TEKS (this may be a Science or Social Studies lesson). Leading Too...
  - Lack of academic motivation
  - Issues retaining information from previously lessons
  - Disrupting the learning process
  - Poor Academic Performance

The habits you build with your student now will help your child in intermediate school, high school, and later in their career.

### How Can You help?

- Set up a good night routine.
  - Set out clothes for the next day.
  - Read before bed and limit screen time.
  - Utilize rewards for following the bedtime weekly or monthly.
- Have an “Exit” plan and try to stick to it every morning.
- Refrain from picking up your child early from school unless absolutely necessary.



**Remember your child needs you to be successful!**



**School  
dismissal is  
at  
3:25 p.m.**



# Glover Elementary

## Attendance Matters!

## Plan Ahead.



### 24-25 School Info

- School begins on Aug. 8 and ends May 29.
- School Hours - 8:05 am - 3:25 pm
- Students are marked tardy after 8:05 am and absent after 10:00 am.
- No Early Pickups after 3:00.

### Student Breaks

Thanksgiving Break - Nov. 25-29

Winter Break - Dec. 23-Jan. 8

Spring Break - Mar. 10-14

### Fall Student Holidays

\*September 2

\*September 27

\*October 4

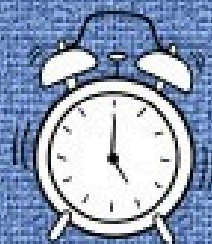
\*\*October 10-15

\*November 1

\*November 11

\*3-Day Weekend

\*\*5-Day Weekend



### Spring Student Holidays

\*January 20

^February 14-17

\*February 28

\*March 31

^April 18-21

\*May 26

\*3-Day Weekend

^4-Day Weekend

### Early Dismissal Days

September 26

December 20

February 13

May 29

Students Dismissed at 12:10 pm

**We encourage scheduling trips and appointments during student holidays to help minimize preventable absences.**





# GLOVER ES PTO

**The Glover PTO needs**

# YOU!

## WHY JOIN THE PTO?



### YOU BENEFIT

Volunteering your time, talents, and energy while socializing with other parents is fun, healthy and rewarding. Being able to contribute and make a positive impact is fulfilling!



### OUR SCHOOL BENEFITS

Help create positive, caring and engaging community by supporting the scholars, teachers and administration!



### OUR COMMUNITY BENEFITS

Teamwork makes the dream work! By working together we are able to have a positive impact in the world around us.

## ANYONE CAN JOIN THE GLOVER PTO!

EMAIL [EDGARGLOVERPTO@GMAIL.COM](mailto:EDGARGLOVERPTO@GMAIL.COM) OR JOIN US FOR OUR MONTHLY MEETINGS.

# News & Events



Fort Bend ISD | Extended Learning

## Extended Day Program

The Extended Day Program is for students in kindergarten through Grade 5, open before and after school to keep students safe and engaged.



Homework Time



SPARK Curriculum  
and Clubs



Physical Activities

### Program Options:

Morning Only  
Afternoons Only  
Morning & Afternoon Combo

Tuition is paid monthly.

Early Dismissal Day and  
Full Service Day child  
care is available.

*Before School*  
6:30 a.m. - 7:30 a.m.

*After School*  
3:25 p.m. - 6:30 p.m.

To register, go to  
**[fortbendisd.reg.eleyo.com](https://fortbendisd.reg.eleyo.com)**

[ExtendedLearning@fortbendisd.com](mailto:ExtendedLearning@fortbendisd.com)  
[fortbendisd.com/ExtendedLearning](https://fortbendisd.com/ExtendedLearning)





# More of Mo City

## Whats Happening in Missouri City



**Missouri City Parks & Recreation: Senior Programs**



**Active Adults 50+**

Check Out the Missouri City Webpage for Activities and Times.



**Farmers Market Partners**  
**Missouri City**



 **FORT BEND COUNTY  
LIBRARIES**  
*Enriching Lives & Expanding Minds*

**Click The Icon for  
Upcoming Events**